



CALL FOR A QUOTE TODAY!



1.877.244.5434



2025 Rental Guide

ALUMINUM TRENCH SHIELD
STEEL TRENCH SHIELD
SLIDE RAIL
HYDRAULIC & AIR SHORING
PIPE PLUGS
ROAD PLATES
AND MORE

LANGLEY
19643 96th Avenue
British Columbia V1M 3C9
604.513.5878

CALGARY
3458 48th Avenue SE
Alberta T2B 3L6
403.248.8500

EDMONTON
22010 113TH Avenue
Alberta T5S 2V7
780.483.0920

SASKATOON
713 66th Street East Unit 10
Saskatoon S7P 0E4
306.978.8500

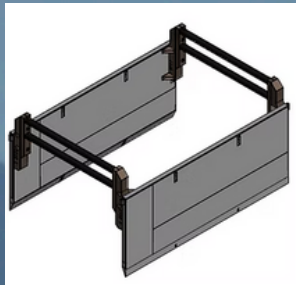
www.mvs.ca

Table of Contents

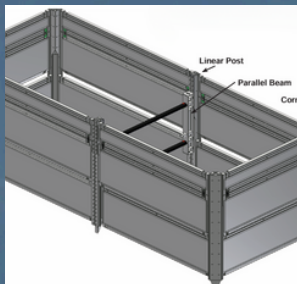
1 Aluminum Shoring



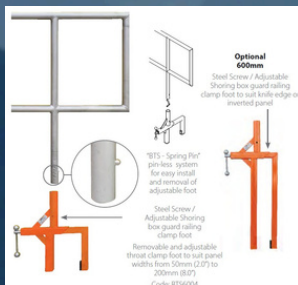
2 Steel Shoring



3 Slide Rail



4 Davit Arms Aluminum Guard Rails



5 Road Plate Hydraulic Shoring



6 Pipe Plugs



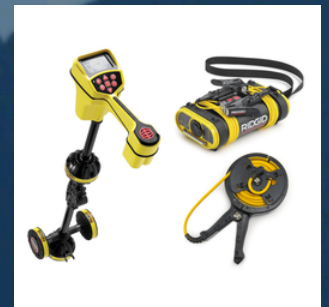
7 Total Stations



8 Level Grade Lasers



9 Ridgid Tools



ALUMINUM BUILD-A-BOX

Mountainview Systems
proudly supplies the
Efficiency Production
Aluminum Build-A-Box,
a **versatile & modular**
aluminum trench
shielding system

Adjustable Spreaders Aluminum Aluminum Build-A-Box (Adjustable Every 4")

18" - 24" Spreader Bar
24" - 36" Spreader Bar
36" - 60" Spreader Bar
48" - 72" Spreader Bar
60" - 96" Spreader Bar
84" - 120" Spreader Bar
96" - 144" Spreader Bar



With easily transportable panels,
corner posts, and accessories,
Build-A-Box configurations of 2,
3, or 4 sided options can be
quickly assembled by hand



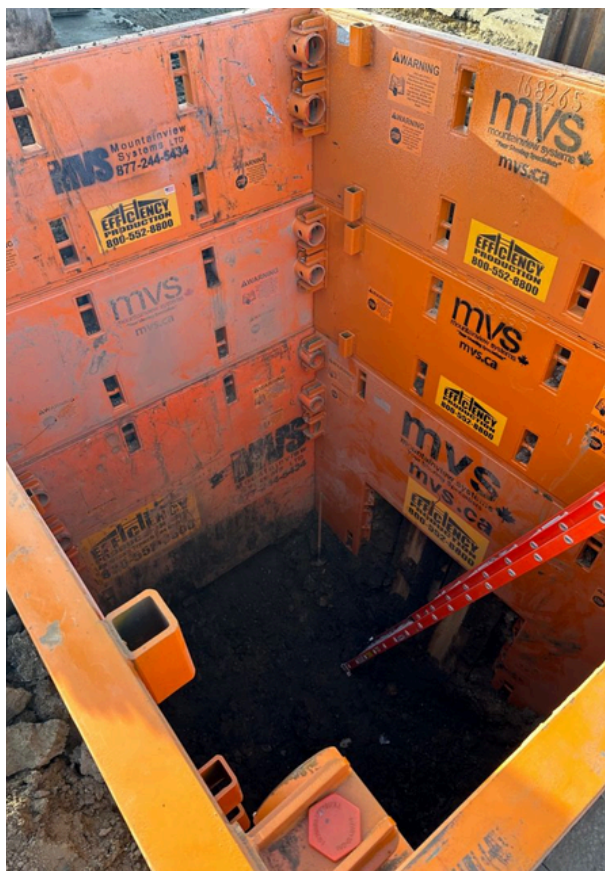
Complex configurations can
be designed, giving you the
durability and adaptability
needed to tackle any job with
confidence and safety.



High Arches - 84"
clearance

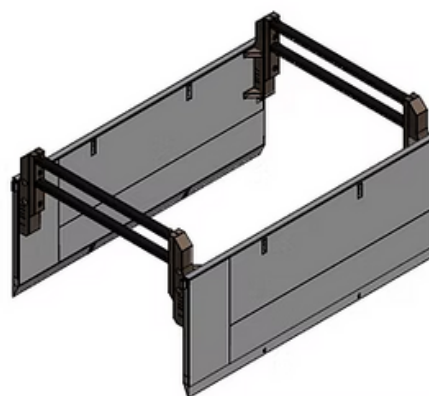
Extensions
for Width
12", 24",
48", 72", 96"

STEEL TRENCH SHIELD



Optional 6" Thick Wall (HT6)
also available

Efficiency Production Steel Wall Trench Shields offer **unmatched protection** for even the deepest and most demanding excavations. Steel Wall Trench Shields are engineered for durability and reliability, these trench shields provide critical safety for your crew while maintaining the integrity of trench walls in challenging soil conditions.



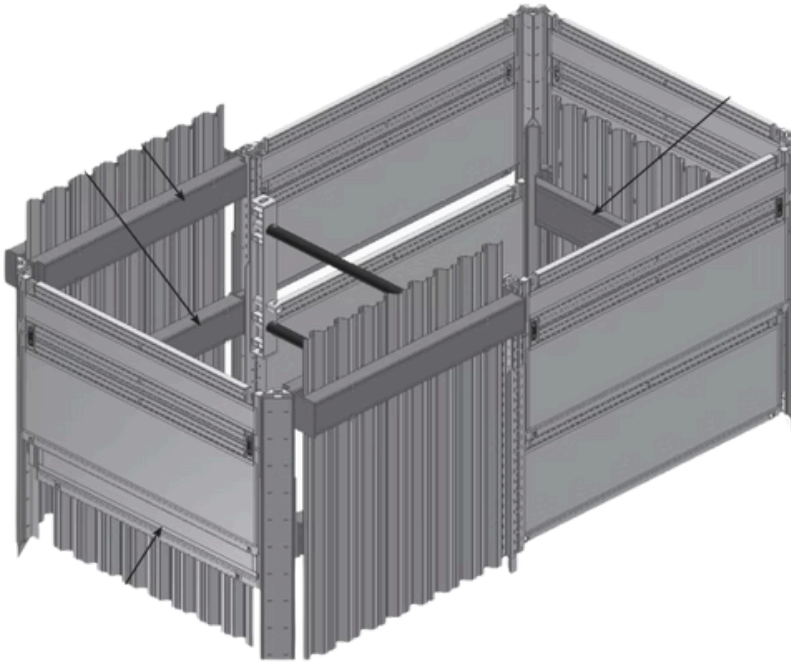
Designed for ease of use and maximum stability, Efficiency Production Steel Wall Trench Shields help ensure your projects are **completed safely, efficiently, and on time.**

Conventional Double Wall Steel Trench Shield

4" Thick Wall (XLD)	Weight	B-Soil	C-60	C-80	Pipe-Clr
4' High x 10' Long	2,850 lbs	61	46	34	22
4' High x 12' Long	3,380 lbs	61	46	34	22
4' High x 16' Long	4,130 lbs	33	25	19	22
4' High x 20' Long	4,970 lbs	27	20	15	22
4' High x 24' Long	6,130 lbs	19	14	10	22
8' High x 12' Long	5,090 lbs	45	34	25	64
8' High x 14' Long	5,090 lbs	45	34	25	64
8' High x 16' Long	7,270 lbs	35	26	20	64
8' High x 20' Long	8,920 lbs	29	22	16	64
8' High x 20' Long	11,420 lbs	19	14	10	64
10' High x 10 Long	6,020 lbs	59	44	33	84
10' High x 16 Long	9,040 lbs	29	22	16	84
10' High x 20 Long	10,890 lbs	21	16	12	84
10' High x 24 Long	12,910 lbs	59	44	33	84



SLIDE RAIL



Installation Assistance

Mountainview Systems offers its customers access to our highly trained team of Slide Rail installation advisors. Our team of professionals can review your site plans and provide solutions for your upcoming projects as well as be onsite during the install and removal of our Slide Rail shoring systems to ensure your success.

4 Sided Pits

Clear Span (Utilizes whaler beam to eliminate cross members and struts for an open pit)

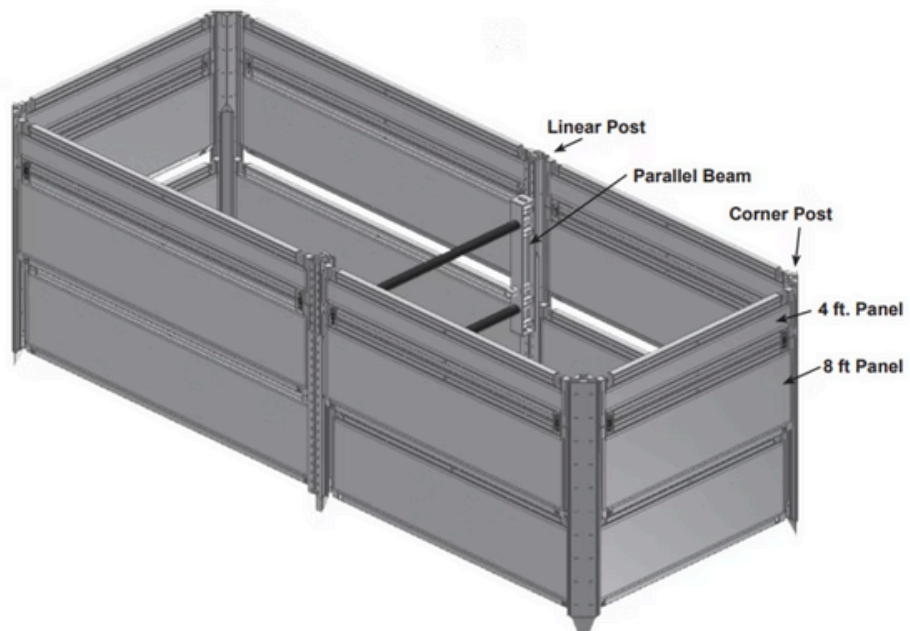
Multi-Bay

Linear Multi-Bay

Shore Trak-Panel Guides

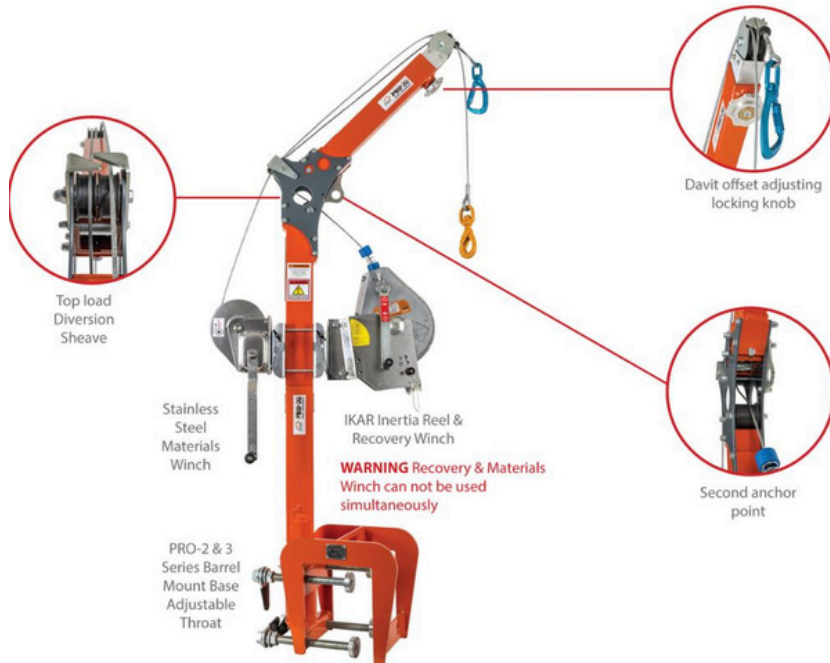
Site Specific Engineering Packages

Site Specific Engineering Packages
Through our experienced Partners and Engineers we are able to offer our customers "Site Specific Engineered Packaged" based on geotechnical information and data pertaining to the purposed excavation.



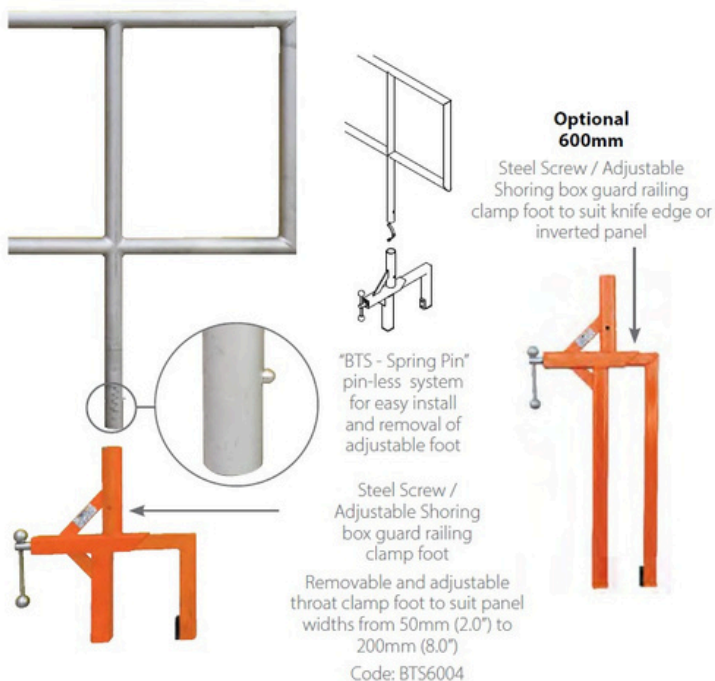
[Slide Rail Brochure](#)

DAVIT ARM RENTALS



BTS Davit & Guard Rails

GUARD RAIL



ROAD PLATE

Part Number	Description	Weight
RP3443	34" Wide x 43" Long	600 lbs
RP-44	4' Wide x 4' Long	800 lbs
RP-48	4' Wide x 8' Long	1,600 lbs
RP-57	5'3" Wide x 7'6" Long	1,750 lbs
RP-510	5' Wide x 10' Long	2,500 lbs
RP-810	8' Wide x 10' Long	4,000 lbs
RP-812	8' Wide x 12' Long	4,800 lbs
RP-816	8' Wide x 16' Long	6,400 lbs
RP-820	8' Wide x 20' Long	8,000 lbs



Road plates are designed with a flush-mounted lifting point, which allow for easy, balanced handling with no protrusions above the surface, ensuring smooth and secure placement every time.



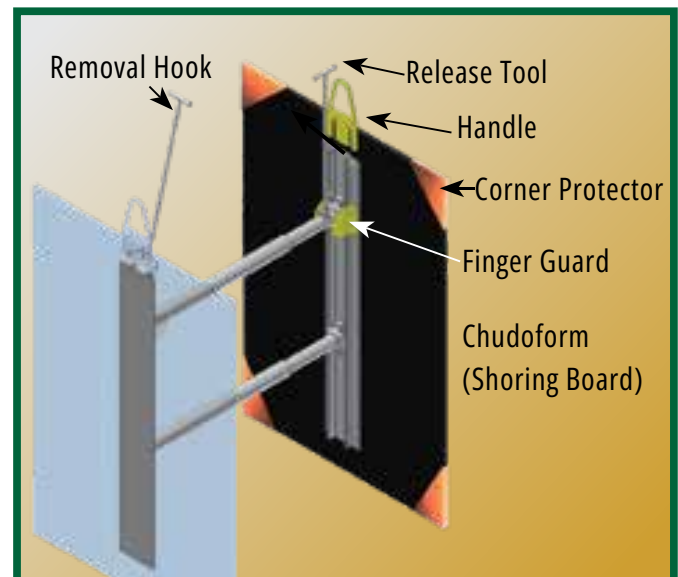
HYDRAULIC SHORING

Cylinder Sizes

22" - 36" Hydraulic Cylinders

28" - 46" Hydraulic Cylinders

36" - 55" Hydraulic Cylinders



ChudoForm Board

4' x 8' Chudoform & Rails

4' x 12' Chudoform & Rails

4' x 16' Chudoform & Rails

PIPE PLUGS

LANSAS & CHERNE Multi-Size Back and Front Pipe Plugs are the most durable Multi-Size Pipe Plugs available today. 2-plys of cross-biased tire cord reinforcement (more on larger sizes) built in each plug.

PART #	SIZE	TYPE	INFLATION	MAX BACK PRESSURE	LENGTH(inch)	WEIGHT(lbs)
270032	3" Test Ball Plug	Single	35 psi	13 psi	5.2	0.4
030-03	3" Test Ball Plug	Single	30 psi	15 psi	6	1
270040	3" Test Ball Plug	Single	30 psi	13 psi	6.5	0.56
030-04	4" Test Ball Plug	Single	30 psi	15 psi	6	1.2
270067	6" Test Ball Plug	Single	30 psi	13 psi	9	1.9
030-06	6" Test Ball Plug	Single	30 psi	15 psi	6	2.5
030-08	8" Test Ball Plug	Single	25 psi	15 psi	7.75	4.8
041386	8" Test Ball Plug	Single	25 psi	15 psi	10.25	3.9
041394	10" Test Ball Plug	Single	25 psi	17 psi	11.75	6
030-10	10" Test Ball Plug	Single	25 psi	15 psi	9.75	7.6
041048	12" Test Ball Plug	Single	25 psi	17 psi	13.75	11.3
035-12	12" Test Ball Plug	Single	25 psi	15 psi	11.75	11

Single Size Plugs



Multi-Size Flow-Thru



The Flow-Thru™ plug goes one step further by offering a large bypass within the pipe plug. The bypasses are ideal for doing a water test or sewer bypass.

PART #	SIZE	FLOW THROUGH	INFLATION	MAX BACK PRESSURE	LENGTH(inch)	WEIGHT
092-48	4"-8" (102-203mm)	2" Hard	30 psi	15 psi	15	6.5
093-610	6"-10" (152-254mm)	3" Hard	30 psi	15 psi	19.7	15
094-812	8"-12" (152-300mm)	4" Hard	25 psi	15 psi	20	20
094-1016	10"-16" (254-406mm)	4"	25 psi	15 psi	28	36
094-1530	15"-30" (381-762mm)	4" Soft	20 psi	8 psi	52	69
094-2036	20"-36" (508-914mm)	4" Soft	20 psi	8 psi	64	117
316448 (316488)*	24"-48" (600-1200mm)	6" Hard	22 psi	10 psi	68	135
316618 (316600)*	24"-60" (600-1500mm)	6" Hard	25 psi	6 psi	88	189
094-3660	36"-60" (914-1524mm)	4" Soft	10 psi	6 psi	84	208
414608 ***	40"-60" (1000-1500mm)	4" Hard	25 psi	8.7 psi	73	350
316968	54"-96" (1375-2400mm)	6" Hard	11 psi	6 psi	132	752



TOTAL STATIONS



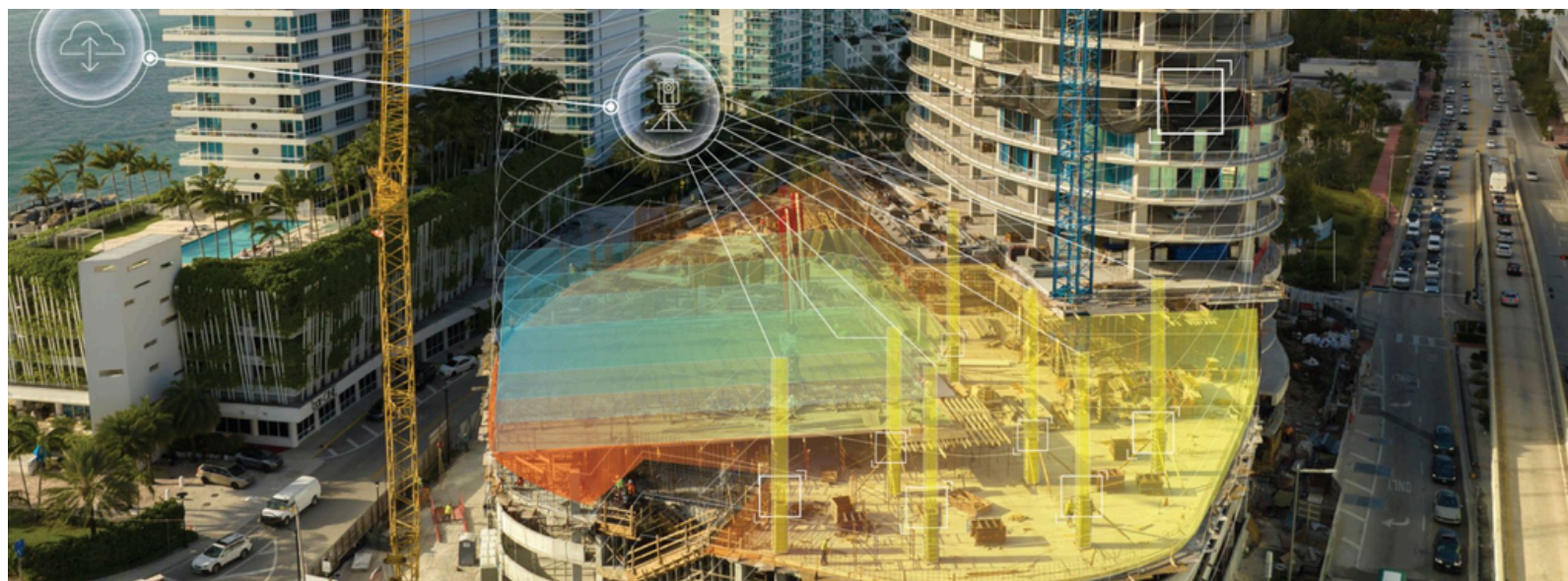
The Leica iCON robotic total stations **accelerate construction and installation processes**, allowing users to layout more points every day with **accuracy** and confidence.

[ICON Leica Brochure](#)

Features include:

- Up to 3500m distance to prism for measurements
- 1mm measurement accuracy
- Icon Field Software running on the unit or available tablet (Depending on model)
- Long range Bluetooth (up to 400m)

*Ask us about
our rent to
own program!*



SPECTRA PRECISION LASERS



Spectra Precision takes pride in **robust** rotary Laser Levels.

These are tools that are engineered to deliver **unparalleled accuracy** in alignment tasks.

*Ask us about
our rent to
own program!*



Features include:

- Up to 1200+ meter operating diameter (4000 ft)
- Bluetooth connectivity and Spectra Precision Laser Remote App eliminates extra cost of the remote (specific models only)
- Up to 1/16" accuracy at 100' depending on model (1.5mm at 30m)
- Up to 175 hours operating time on alkaline batteries
- Unbeatable 5-year warranty
- Single person manual slope - *model dependent

[Spectra Brochure](#)



RIDGID TOOLS



SR-20 UTILITY LOCATOR

The SeekTech SR-20 Locator is a **lightweight yet rugged** receiver that provides all the information needed for faster, more **accurate locates**. Target line and guidance arrows quickly identify distortion.



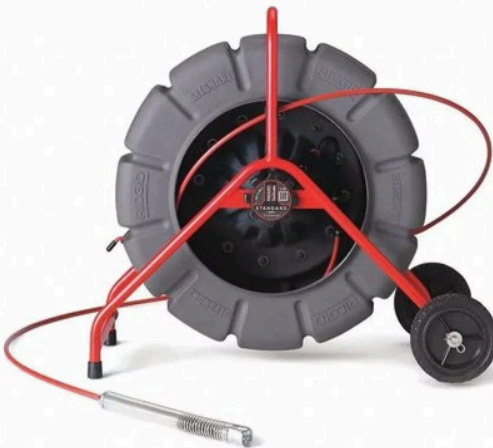
[Locator Brochure](#)

*Ask us about our
rent to own
program!*



SEESNAKE CAMERA & MONITOR

Digital Monitors comes equipped with **Wi-Fi connectivity**.



- Easy operation
- Brighter LEDs improve in-pipe visibility
- HDR, bright LEDs, and **self-leveling camera** offer superior imaging



- Ultra flexible NANOreel has a 15.5mm camera to **fit through P-traps**
- Reel lengths up to 325' (99m)
- Integrated Sonde on select models
- Offers the smoothest in-pipe visual

[Camera Brochure](#)

A blue-tinted photograph of a mountain range. The foreground shows dark, silhouetted mountain peaks. In the background, several layers of mountain ranges are visible, creating a sense of depth. The sky is a pale blue with some wispy clouds. Overlaid on the center of the image is the text "CONTACT US BY LOCATION" in a white, bold, sans-serif font. The word "LOCATION" is significantly larger than the other words.

CONTACT US BY
LOCATION

LANGLEY

19643 96th Avenue
British Colombia V1M 3C9
604.513.5878
team.pacific@mvs.ca

CALGARY

3458 48th Avenue
SE Alberta T2B 3L6
403.248.8500
team.southern@mvs.ca

EDMONTON

220120 113TH Avenue
Alberta T5S 2V7
780.483.0920
team.northern@mvs.ca

SASKATOON

713 66th Street East Unit 10
Saskatoon S7P 0E4
306.978.8500
team.saskatchewan@mvs.ca



LANGLEY
15643 96th Avenue
British Columbia V1M 3C9
604.513.5078

www.mvs.ca