



Measure, Level, Align,
Detect and Locate.



 HEXAGON

- when it has to be **right**

Leica
Geosystems

Leica DISTO™ Family

Make measuring easier. Use the original.

Experience precision, efficiency and reliability with the Leica DISTO™, the original laser measure trusted by professionals worldwide. With over 30 years of innovation, Leica DISTO™ offers a versatile portfolio that covers every need, whether indoors or outdoors, simple or complex.



Leica DISTO™ D1 Part # 846805
Handy, simple, precise!

At the touch of a button the Leica DISTO™ D1 measures heights, distances as well as niches quickly and reliably.

- Bluetooth® Smart for data transfer to smart phones and tablets
- Free App Leica DISTO™ Plan
- 130' range
- XRange Power Technology
- Clear, illuminated 3 line display

New!



Leica DISTO™ D2R Part # 1017800
The advanced one.

Range 490ft. For smart performance in indoor applications

Leica DISTO™ D2G Part # 1017809
The high-visibility one

Range 390ft. For precise measurements in bright indoor environments. Its highly visible green laser dot is four times more visible than a red dot, ensuring unparalleled visibility.

- Bluetooth 4.2 and NFC data transfer
- Smart Horizontal
- Smart Room capable with Disto Plan app
- add and subtract, volume
- 30 measurement memory
- 4-line display
- intelligent end-piece



Leica DISTO™ D5
Part # 950908

Part # 950879 Pro kit

Strong in Outdoor Areas

The Leica DISTO™ D5 is particularly suitable for distance measurements in outdoor areas. Thanks to the digital Pointfinder, the high functionality and the compatibility with the Leica DISTO™ Plan app, every measuring situation is solved quickly and efficiently. The results can be easily documented to support a target-oriented and error-free digital workflow.

- Large 2.4" Scratch resistant screen for quick intuitive operation
- Measure with a picture
- Image Download via USB
- 650ft Range, ± 1/16" accuracy
- 0.1 degree accuracy tilt sensor for high accuracy vertical measurements
- Bluetooth 5.0 Smart (works with iOS and Windows hardware/software supporting Bluetooth 5.0 Smart Ready)



Free App – Leica DISTO™ Plan*

Measurement data can be transferred using the Bluetooth® Smart Technology. The free app Leica DISTO™ Plan supports the creation of ground plans or tables on iPhone, iPad and Android supporting BT 4.0. Dimensions can also be entered onto photographs.

Free App
Leica DISTO™ Plan



New!



Leica DISTO X1 Part # 1017805
Robust laser measure with an IP65 protection rating, ideal for indoor tough construction site.

The Leica DISTO X1 is a highly reliable distance meter for tough indoor construction site conditions. Its robust housing, made of rubber and glass-fibre reinforced plastic, is built to withstand drop tests from a height of 2 metres, ensuring durability and consistent accuracy. With IP65 protection, it works perfectly in dusty and wet conditions and can be cleaned under water with ease. Effortlessly connect to the Leica DISTO Plan app using NFC for quick, hasslefree data transfer, visualisation and documentation. By streamlining measurement tasks and data management, it increases efficiency and boosts professionalism on any project.

- Range 330 ft
- Bluetooth 4.2 and NFC data transfer
- add and subtract, volume, 4-line display
- IP 65 dust and waterjet protection
- 6 ft drop tested

Free App – Leica DISTO™ Plan*

Measurement data can be transferred using the Bluetooth® Smart Technology. The free app Leica DISTO™ Plan supports the creation of ground plans or tables on iPhone, iPad and Android supporting BT 4.0. Dimensions can also be entered onto photographs.



Leica DISTO™ X3 Part # 850834
Rugged design for tough conditions

- Water jet and dust protected to IP 65 standards
- 2m drop tested
- Solid rubber housing
- End-piece XL
- Bluetooth® Smart – document and visualise
- Stake-out – a well known function re-invented
- Create sketches, plans and document your measurements on your smartphone or tablet automatically when taking measurements



Free App – Leica DISTO™ Plan

New Leica DISTO™ technologies in combination with the Smart Room function of the Leica DISTO™ Plan app allow you to quickly create scaled floor plans on your smartphone or tablet.



Leica DST 360 Part # 848783
 The Leica DST 360 transforms your DISTO™ X3 or X4 and-held laser device into a measurement station. It allows you to measure distances between any two points from one

Leica DST 360-X Part # 946095
 The Leica DST 360-X works with DISTO X6 to create point-to-point measuring.

Leica TRI 120 Tripod Part # 848788
 In a carton box.

Tech Data	Part #	Accuracy	Tilt	Range	Size	Weight	Protection	ISO Rating	Bluetooth
D1	846805	~ 1/16", ±1.5 mm		0.60" to 130'	4.5" x 1.7" x .92"	3.53 oz.	IP54	ISO 16331-1	4.0
D2R	1017800	~ 1/16", ±1.5 mm		1.97" to 490'	4.6" x 1.7" x 1.02"	3.53 oz.	IP54	ISO 16331-1	4.0
D2G	1017809	~ 1/16", ±1.5 mm		1.97" to 390'	4.6" x 1.7" x 1.02"	3.53 oz.	IP54	ISO 16331-1	4.0
D5	950908	~ 1/16", ±1 mm	360°	1.6" to 650'	5.67" x 2.36" x 1"	6.4 oz.	IP54	ISO 16331-1	4.0
X1	1017805	~ 1/16", ±1 mm	360°	1.6" to 330'	5.2" x 2.2" x 1.14"	6.49 oz.	IP65	ISO 16331-1	4.0
X3	850834	~ 1/16", ±1 mm	360°	1.6" to 492'	5.2" x 2.2" x 1.14"	6.49 oz.	IP65	ISO 16331-1	4.0
X6	950909	~ 1/16", ±1 mm	360°	2" to 820'	6.1" x 2.7" x 1"	8.1 oz.	IP65	ISO 16331-1	4.0

* In accordance with ISO 16331-1. See DISTO manual or Leica website for complete specifications.



Shown with optional accessories



Leica DISTO™ X6

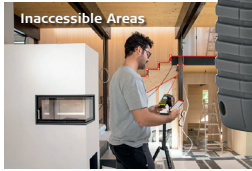
Part # 950909

Part # 950878 P2P kit,

Efficient Measurement for Digital Workflows

P2P Technology is a safe, accurate and efficient measurement method when it comes to distance measurements in inaccessible areas or complex measurement situations. It also enables a completely digital workflow, as the captured measurement results can be further processed in any CAD software.

- Measure the distance between any two points
- Measure any area by just measuring its corners
- New tripod adapter for precise aiming
- Create a CAD file right on your DISTO™
- Send point data right into your CAD system
- Bluetooth® Smart
- Range: up to 820'



Inaccessible Areas



Measure complex shapes



P2L Measurements



Point Data Transmission

Technical Data	Part #	Accuracy	Tilt	Range	Size	Weight	Protection	ISO Rating
X6	950909	1/16" 1 mm	360°	2" to 820'	6.1" x 2.7" x 1"	8.1 oz.	IP65	ISO 16331-1

Leica iCON Trades Solution

The growing significance of digital measurement and layout techniques is driven by: increased project complexity with tight deadlines, the steady rise in digitalization, and the industry's requirement for clear and consistent documentation. The Leica iCON iCS20 and iCS50 3D measurement and layout sensors are perfectly suited to cater to this trend.



Leica iCON trades Software for Building Trades

Based on control elements familiar from Android apps. Easy to use and quick to learn.

- Leica iCON trades for Interior Finishing
- Leica iCON trades for Templating
- Leica iCON trades for Layout

New!



Leica iCON iCS20/50 Motorised Construction Sensors

The Leica iCON iCS20/50 motorised construction sensors are perfect for capturing 3D measurement data for interior finishing as well as projecting installation points for mechanical, electrical, and plumbing systems.

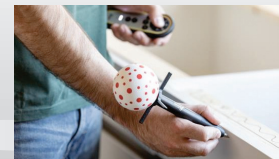
Leica vPole/vSphere - Layout More Points

The unique visual-based target tracking is very robust and ensures that the Leica iCON iCS50 always stays connected to the Leica vPole. It also automatically compensates for pole tilt and automatically detects the pole height.



Leica vPen - Ideal for Digital Templating

This unique wireless measuring pen is very versatile and extremely precise (± 1 mm accuracy at 10 m). You can use it to measure on any surface, including glass, by simply touching the point you want to measure.



Leica vTarget - Easy Relocation

The visual-based target detection and the automated process greatly simplify the relocation of the device. New Leica vTargets are automatically detected. This saves time and avoids errors.



Leica Lino Family



The accurate, self-levelling point and line lasers

With Leica Linos everything is plumb and perfectly aligned. Leica Linos project lines or points with absolute precision. The time-consuming and tedious techniques of drawing lines and marking points are things of the past.

- **Self-levelling:** Leica Linos automatically compensate for minor angular misalignments by levelling themselves over a range of $\pm 4^\circ$. So you can avoid errors.
- **Proven optics:** Top quality optics and proven Power Range Technology™ ensure that the projected laser lines and points are highly visible and accurate.
- **Simple operation:** With only two buttons, Leica Linos are simple and intuitive to use.
- **Pendulum Lock**



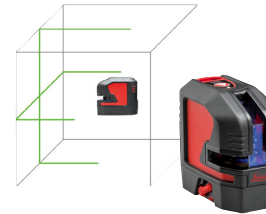
Technical Data	P5	L2	L2P5	L2G	L2P5G	L6R	L6G
Part #	864427	864413	864431	864420	864435	912969	912971
Measuring range	98'	82'	82'	115'	115'	82'	115'
Range with detector	N/A	262'	262'	262'	262'	210'	210'
Levelling accuracy	$\pm 0.002''/'$	$\pm 0.002''/'$	$\pm 0.002''/'$	$\pm 0.002''/'$	$\pm 0.002''/'$	$\pm 0.002''/'$	$\pm 0.002''/'$
Self-levelling range	$\pm 4^\circ$	$\pm 4^\circ$	$\pm 4^\circ$	$\pm 4^\circ$	$\pm 4^\circ$	$\pm 4^\circ$	$\pm 4^\circ$
Number of points	5	N/A	4	N/A	4	N/A	N/A
Lines	N/A	2	2	2	2	3-360°	3-360°

One powerful platform



Leica Lino P5 Part # 864427

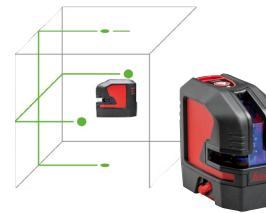
The Leica Lino P5 point laser is very easy to use. At the push of a button, it accurately projects five reference points at exact right angles to one another.



Leica Lino L2 Part # 864413 (red laser technology)

Leica Lino L2G Part # 864420 (green laser technology)

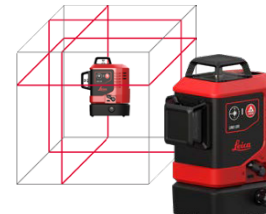
The high-precision optics of the Leica Lino L2 and L2G ensure outstanding laser line visibility up to 82 feet, depending on lighting conditions. Its exceptionally long horizontal and vertical laser lines are projected to floors, walls and ceilings at more than 180 degrees.



Leica Lino L2P5 Part # 864431 (red laser technology)

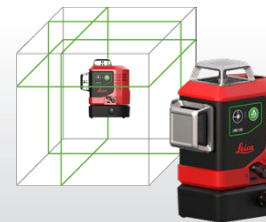
Leica Lino L2P5G Part # 864435 (green laser technology)

The Leica Lino L2P5G uses the best green laser technology and combines it with the functionalities of a cross line laser and a point laser. Its green laser beams and points are up to four times more visible to the human eye compared to red ones, which makes it the ideal tool for bright environments and large rooms.



Leica Lino L6R Part # 912969

360° laser line projection for multi-directional alignment - perfect for indoor applications. The laser's vertical lines are easily adjusted once the plumb point, which is located outside the device, is set. This unique feature allows the plumb point (cross-section of two vertical lines) to stay in position while the two vertical lines rotate around it by $\pm 10^\circ$.



Leica Lino L6G Part # 912971

360° green laser lines ensure highest visibility of up to 210 feet in diameter; making this the perfect tool for multi-directional alignment, plumbing, levelling and squaring tasks in large and bright environments.

NEW Leica Lino Accessories

Leica Twist 250
Part # 866133



Leica Twist 360
Part # 866130



Leica UAL 130
Part # 866131



RGR 200 and RGR 300-D Receivers
Part # 866090 Part # 1017990



Leica NA300/500/700 Series

Automatic Levels – Reliable levels for your site



- Quick and easy measurements
- Unique design and highest quality of results for levelling needs
- Manufactured for the most rugged sites and the harshest conditions
- Protected shape for increased ergonomic handling while ensuring the highest quality results
- Simple handling for quick and accurate measurements
- Distinctive design and proven technology, inside and out

Technical data	NA320/324/332	NA520/524/532	NA720/724/730 plus
Magnification	20x, 24x, 32x	20x, 24x, 32x	20x, 24x, 30x
Standard deviation (per 1 km double levelling)	.098", .079", .071"	.098", .075", .063"	.098", .079", .059", .047", .028"
Measuring angle	360°	360°	360°
Ingress Protection	IP54	IP56	IP57

Leica Piper 100/100G/200/200G

The world's most versatile red or green pipe laser

Built with a rugged aluminum housing, these pipe lasers perform powerfully even in tough jobsite conditions. The Leica Piper is the only pipe laser that fits inside a 4 inch pipe.



And there is more... The Piper Green Series comes with 4 times better laser visibility for longer working distances while achieving higher accuracy while remaining the smallest pipe laser in the market.

- Grade checking in all gravity flow pipe
- Gravity flow pipe lining
- Sanitary sewers
- Storm sewers
- Culverts



Technical Data	Working Range	Grade Range	Self leveling Range	Size	Weight	Protection	Battery Life
100/100G/200/200G	up to 650'	-10% to +25%	-15% to +30%	3.8" Dia.	4.4 lbs	IP68	40 hours

Leica Rugby 600 Series

Your reliable team player on site

Leica Rugby lasers are the toughest rotating lasers suitable for all construction applications. Level, align and square much quicker than ever before, eliminating costly errors and downtime.

- Simple and reliable
- Choice of Alkaline or Li-Ion batteries
- 5-year warranty
- Protection class IP67



Technical Data	Rugby 610	Rugby 620	Rugby 640	Rugby 640G	Rugby 680
Product type	General const.	General const.	Multipurpose/H.V.	Multipurpose/H.V.	Semi-auto grade
Laser class	Class 1	Class 1	Class 2	Class 2	Class 1
Functionality	Self-leveling horizontal, one button laser	Self-leveling horizontal & manual slope in one axis	Self-leveling horiz. & vert. 90° and manual slope in dual axis	Self-leveling horiz. & vert. 90° and manual slope in dual axis	Self-leveling horiz. dial-in grade in dual axis
Accuracy	± 3/32" @ 100'	± 1/16" @ 100'	± 1/16" @ 100'	± 1/16" @ 100'	± 1/16" @ 100'
Grade range	-	-	-	-	± 8% DG
Smart slope	-	-	-	-	Yes
Rotation - RPS	10	10	0, 2, 5, 10	0, 2, 5, 10	10
Range dia. RE 120	1,650'	2,000'	1,650'	1,650'	2,000'
Range dia. RE140/160	3,600'	3,600'	3,600'	3,600'	3,600'

Rugby 600 models are available with 4 receiver options.



Technical Data	Rod Eye 120G Digital	Rod Eye 120 Basic	Rod Eye 140 Classic	Rod Eye 160 Digital
Detection window	3"	3"	5"	5"
Detectable spectrum	500 nm to 570 nm	600nm to 800nm	600nm to 800nm	600nm to 800nm
Numeric readout height	2.75"	3.5"	-3.5"	3.5"
Detection accuracies				
Very fine		-	-	± 0.02"
Fine	± 0.04"	± 0.04"	± 0.04"	± 0.04"
Medium	± 0.08"	± 0.08"	± 0.08"	± 0.08"
Coarse	± 0.12"	± 0.12"	± 0.12"	± 0.12"
Very coarse		-	-	± 0.20"

Leica Locators

Leica DD100 Series Locators

The Leica DD100 series locators reduce the complexity normally associated with locating of buried utilities. The DD100 series automated pinpointing process improves the detection of utilities, reduces utility damage and increases workforce safety

DD300 CONNECT Utility Locator Solution

The new Leica DD300 CONNECT utility locator combined with the DX Shield software and the DA300 signal transmitter is the complete detection solution for utility professionals and anyone who is breaking ground. The Leica DD300 CONNECT utility locator uses industry-leading digital signal processing to identify underground assets deeper, faster and more accurately than any other system. The Leica DD300 CONNECT utility locator solution allows basic to expert users in the detection of underground pipes with ease-of-use, speed and accuracy.



New!



DE100 Transmitter

DT100 Cable Tracer

The Leica DT100 redefines precision locators, offering a robust solution tailored to industries like construction, utilities, and surveying. Its intuitive interface simplifies complex location tasks, catering to both seasoned professionals and new users.

- Powerful Performance, Simple Interface
- Improve Locating Efficiency
- Work Safely and Reliably



Leica DD120

For construction professionals who need to understand what is beneath their sites.



Leica DD130

For construction professionals who need to accurately locate and trace buried utilities.



DA300 Transmitter



Leica DD300

Leica DD300 Locator & DX Shield Software - Work safer, work faster, work simpler



DE100 Transmitter

Leica DT100

Improve Locating Efficiency. Powerful Performance, Simple Interface

Technical Data	DD120	DD130	DD300	DT100
Frequency / Mode	Power mode 50 Hz or 60 Hz, Radio mode 15 kHz to 60 kHz, Transmitter mode 8 kHz and 33 kHz, Auto mode = Power + Radio mode			
Depth Range	Line: 1' - 10' Sonde: 1' - 10'	Line: 1' - 10' Sonde: 1' - 32.7'	Line: 4" - 16.4' Sonde: 4" - 23'	Auto 20' Pushbutton 36'
Protection	Conforms to IP54		Conforms to IP65	
Battery life	15 hours		20 hours	
Depth accuracy	10%	10%	5%	±5% to 10'
Bluetooth® GPS & GIS	Not available	Not available	enabled	enabled
Memory size	Not available	Not available	8 GB memory	8 GB memory

Leica Detection and Mapping

A utility map shows the positioning and identification of buried pipes and cables beneath the ground. Combine mapping process with a topographical survey and the results will provide you with a comprehensive detailed map of utilities.



Leica DSX

Quickly and easily avoid, locate and map underground utilities with the new Leica DSX ground penetrating radar (GPR) solution. Unlike other GPR solutions, users do not require expertise in interpreting raw radar data. The DSX uses a smart algorithm in DXplore software to accurately field generate 3D utility maps on the tablet within minutes. No more waiting days for post processing! Optional integration of GPS/GNSS for mapping, with easily exported data in PDF and DXF formats. Additional integration with Leica MC1 machine control software aids excavating contractors in avoiding utility strikes using real time avoidance signals aboard excavators outfitted with Leica machine control systems.



Leica DS4000

Introducing the Leica DS4000: a dual-antenna Ground Penetrating Radar (GPR) system designed for efficient and precise subsurface scanning. Powered by IDS's advanced ESt Technology, it operates across an 80–1500 MHz frequency range using 200 MHz and 900 MHz antennas, offering 30% greater depth penetration for enhanced utility detection. Lightweight, portable, and user-friendly, it integrates seamlessly with software featuring Quick Scan Mode, enabling on-site marking, real-time reporting, and digitalization to save time and reduce costs.

Portable Scanning

Reveal true data, make decisions now.



IDS C-Thru Concrete Scanner

C-thru all-in-one Ground Penetrating Radar (GPR)

C-thru is an all-in-one Ground Penetrating Radar (GPR) for accurate scanning and real time analysis of concrete structures. Construction and service companies as well as civil and structural engineers can now improve the way they locate rebars, voids, post-tension cables, cavities, conduits, and any other objects buried in the structure before cutting or drilling into the concrete.



Features and Benefits:

Clearer and faster surveys

Detection of both first and second levels of rebars thanks to the system's double polarisation.

Safe drill in the surveyed structure

Rebar/void automatic insight capabilities that improve safety before cutting or drilling into the concrete.

Fully visible, multi-touch display

Data displayed on the screen are never obscured by the handle or the user's hand.

Simplified data interpretation

Optimal decision-making supported by visualization of acquired data in 3D models.

Increased data accuracy

Eliminate manual, error-prone paper grids with an automatic positioning and navigation system.

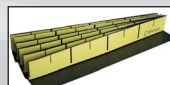
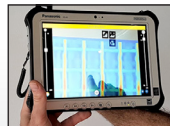
Advanced data visualization

Augmented reality for 3D data visualization and sharing across operators – in real time or intervals after acquisition.

Automated data acquisition and analysis

Automatic detection of the first layer of rebars and result exportation.

Accessories



Portable Hand Held Scanning

DUAL POLARISATION

Detection of both first and deeper levels.

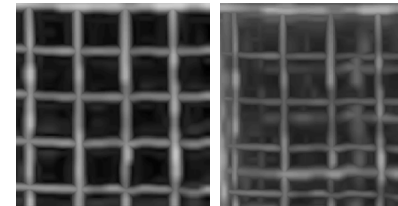


C-thru XS

The compact hand-sized GPR with dual polarization to never miss a detail in one scan



C-thru XS is the compact dual polarized GPR system for concrete inspection: the smallest and lightest antenna on the market capable of detecting shallow and deep targets in one scan. C-thru XS, adding to the C-thru product family, allows the most accurate scanning performance and real-time analysis of concrete structures with a hand-sized device able to perform in-depth inspections.



Standard view C-thru XS Dual Antenna

DUAL ANTENNA POLARIZATION: DETECT SHALLOW AND DEEPER TARGETS IN A SINGLE MOVE.

Concrete inspection is fast and simple with the most accurate scanning performance to easily locate and identify rebars, ducts, cables and other objects.

Multiple configurations:

STANDALONE: Easily scan across any concrete inspection scenario with C-thru XS and promptly visualize the collected data results on your tablet

INTEGRATED USE WITH C-THRU: C-thru XS' combined use with C-thru allows to cover any jobsite challenge and quickly visualize data on C-thru's multi-touch display.

Real-time investigation of concrete structures is fast and simple with C-thru XS. Its compact size and light weight allow to easily investigate hard to reach areas and around obstructions.



All-in-one and One-for all Ground Penetrating Radar



Chaser XR

Extending the power of EsT technology to geophysical surveying

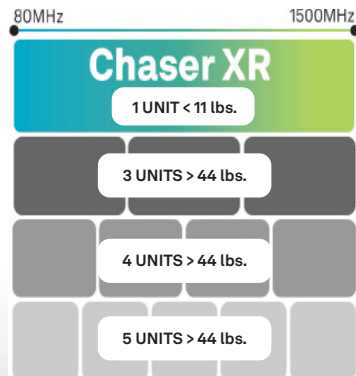


Chaser XR is the new powerful GPR solution setting a new standard in subsurface investigation. Expanding the power of EsT technology to geophysical surveying, Chaser XR is the all-in-one and one-for-all GPR antenna featuring the most extended inspection range on the market (80 MHz - 1500 MHz).

EsT | Equalized scrambled Technology: a next level performance in subsurface profiling.

Thanks to EsT, Chaser XR is able to offer unparalleled GPR performance maximizing subsurface profiling to a deeper range compared to any other solution available on the market.

This technology is able to exploit the entire radiating performance of the antenna for full control of the GPR signal, performing the best noise rejection and capturing both the lower and higher frequencies for an extended depth range and an ultra-high resolution.



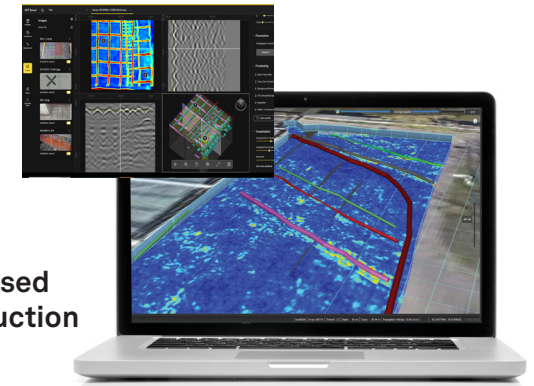
One solution for multiple scenarios: Chaser XR's extended inspection range covers different geophysical surveying applications ranging from environmental assessment to tunnel inspection.

Organize and share your GPR data results for a comprehensive analysis of concrete inspections

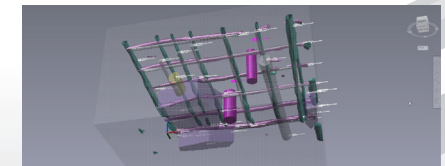
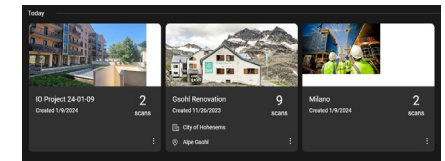
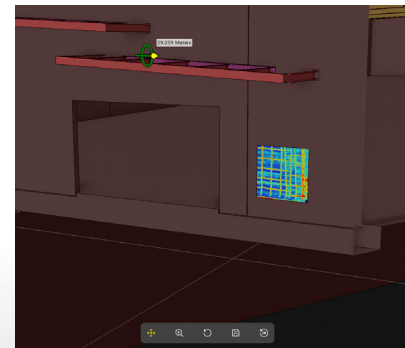


NDT Reveal

The professional CAD-based GPR software for Construction and Building inspections



NDT Reveal is the professional desktop GPR software for post-processing and analysis of data collected by C-thru and C-thru XS concrete inspection devices. NDT Reveal allows you to successfully organize and share your GPR data whilst streamlining your workflow in data processing and analysis. Enjoy accurate and comprehensive overviews on GPR data with easy integration of on-field inspection activities into the big picture of Building and Construction projects.



NDT REVEAL MAIN FEATURES

- Locate GPR jobsite surveys on the CAD drawing
- Display 2D and 3D GPR data and insert features (e.g. rebars, post tension cable voids and drill areas)
- Produce digital exports: DXF and DWG format
- Job site reports with 2D and 3D GPR data of detected items, photos, sketches and CSV tables.

NDT REVEAL BENEFITS

- Accurate overview on your Building and Construction projects
- Integrated visualization of data, photos, sketches
- Easy-to-create and complete jobsite reports

Recommended original accessories

Always perfectly equipped for your application

Leica Geosystems offers a comprehensive selection of accessories which you can use to adapt your laser distance meters and levels ergonomically to suit your respective task.

DA Accessories



DA175 Signal Transmitter 1 watt (Part # 949370) when connected to a utility with output frequencies of 512Hz, 640Hz, 8kHz, 33kHz.

Trace Rod 165' (Part # 850278) or 263' (Part # 850279) enables the complete length of non-conductive drains, duct or pipe to be traced when used in conjunction with a DA series transmitters.

Transmitter Clamp 4" (Part # 850280) or 3.15" (Part # 850281) clamp, used in conjunction with the DA series transmitters and Locator to trace the route of buried utilities such as Telecom cable, Power cables and pipes.

Sondes - used to trace drains, sewers and other non-conductive utilities (part #s 850288, 850289, 850290, 850291, 856131)

Organization



Organizer Belt Pouch for Leica DISTO Part # 1026879
The pouch offers enough space for a Leica DISTO - from the compact models to the DISTO X6 - as well as writing utensils and light tools.

Tripods



TRI75 Flat-head Tripod Part # 975718
The small and handy tripod for everyday use. Stable and turnable headplate with 1/4 - 20 threads. Perfect for the LINO series or in conjunction with the TA360, FTA360, FTA360S and your DISTO.

TRI105 Articulating-head Tripod Part # 975728
High quality tripod with 1/4-20 thread mounting plate and articulating elevator head for height adjustments. For use with Leica Disto models that incorporate a tripod mounting thread

Tri200 Flat-head Tripod Part # 828426
The TRI 200 is a surveyor style tripod that is more stable and durable than the standard issue TRI70. This package is for professionals that frequently measure on uneven grade, in rugged environments and in the elements.

CTP104 Aluminium tripod Part # 767710
Light tripod with shoulder strap and side clamp screws for Leica Jogger 20/24, Sprinter 50, Roteo and Rugby

Target plates



GZM3 Target plate
Part # 820943
For 3D DISTO™ and DISTO™ S910

GZM26 Target plate, DIN A4
Part # 723385
8.25" x 11.5", white side for shorter distances, brown side for longer distances, for all Leica DISTOs™

GZM27 Target plate set
Part # 723774
5.75" x 3.85" stick-on with kneading adhesive, for all Leica DISTOs™

GZM30 Target plate set
Part # 766560
7.75" x 10.75" for setting-up on floor marks, for all Leica DISTOs™

More practical accessories



Red Laser glasses
Part # 780117
Red laser glasses for improved visibility of red lasers

LSA360-S Adapter
Part # 838704
Designed specifically for the S910, D810 touch, D510, D410. The adapter mounts to a typical survey range pole with diameters from 0.45" - 1.35").

TSA360-S Adapter
Part # 828414
High precision tripod adapter for the Leica DISTO™ S910

LINO wall mount bracket
Part # 758839
Universal application thanks to screw fixing (1/4" screw)

TA360 Tripod Adapter
Part # 778359
Allows the base of the disto to remain in a fixed position for accurate calculation. Use with Tri70 tripod.
For DISTO™ E7400x, D330i, D5, D8

FTA360 Tripod Adapter
Part # 799301
Tripod adapter with fine-adjustment for easy and precise targeting. Use with Tri70 and Tri100 tripods.
For DISTO™ D810, E7500 and E7500i

FTA360-S Tripod Adapter
Part # 828414
Tripod adapter with fine-adjustment for easy and precise targeting. Use with Tri70 and Tri100 tripods.
For DISTO™ S910 only

USB Battery charger for DISTO™ D810 & S910
Part # 806566
Plug into the cigarette lighter and charge your Leica DISTO™ D810 touch

Worldwide service and support

Leica Geosystems are pioneers in laser precision for measuring technology and guarantee quality and reliability. All our products have the benefit of our worldwide network of service centers and dealerships. Leica Geosystems is always somewhere close to you.



Dealer Information:

Leica Geosystems

555 North Point Center East
Suite 700
Alpharetta, GA 30022 USA

www.leica-geosystems.us
www.DISTO.com

Part No. 8237944
6/2026 DM

- when it has to be **right**

Leica
Geosystems