



mvs
mountainview systems 
"Equipment Rentals"

30
YEARS
OF
EXCELLENCE

CALL FOR A QUOTE 1.877.244.5434

2026
***Rental
Guide***

www.mvs.ca

Langley

Calgary

Edmonton

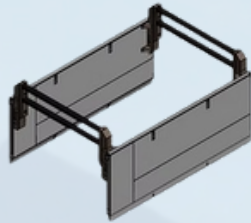
Saskatoon

TABLE OF CONTENTS

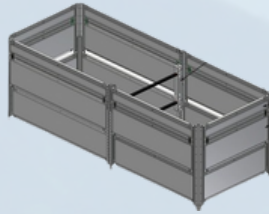
1 Aluminum Shoring



2 Steel Shoring



3 Slide Rail



4 Davit Arms Aluminum Guard Rails



5 Road Plate Hydraulic Shoring



6 Pipe Plugs



7 Receivers Level Best



8 Total Station



9 Level Grade Lasers



10 GPS



11 Ridgid Tools



ALUMINUM BUILD-A-BOX

Mountainview Systems
proudly supplies the
Efficiency Production
Aluminum Build-A-Box,
a **versatile & modular**
aluminum trench
shielding system

Adjustable Spreaders Aluminum Aluminum Build-A-Box (Adjustable Every 4")

18" - 24" Spreader Bar
24" - 36" Spreader Bar
36" - 60" Spreader Bar
48" - 72" Spreader Bar
60" - 96" Spreader Bar
84" - 120" Spreader Bar
96" - 144" Spreader Bar



With easily transportable
panels, corner posts, and
accessories, Build-A-Box
configurations of 2, 3, or 4 sided
options can be **quickly**
assembled by hand



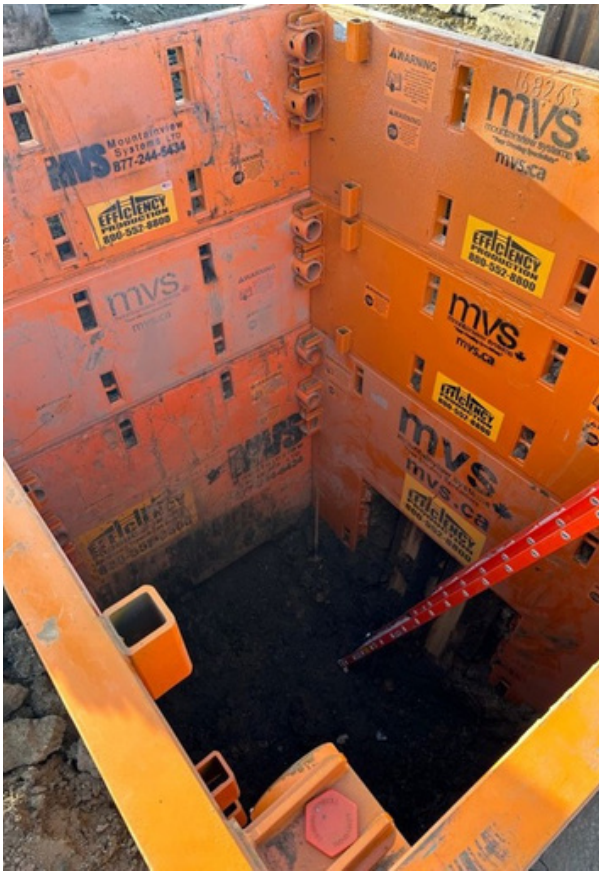
Complex configurations can
be designed, giving you the
durability and adaptability
needed to tackle any job with
confidence and safety.



High Arches - 84"
clearance

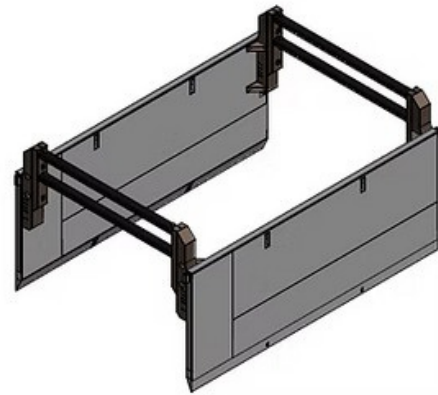
Extensions
for Width
12", 24",
48", 72", 96"

STEEL TRENCH SHIELD



Optional 6" Thick Wall (HT6)
also available

Efficiency Production Steel Wall Trench Shields offer **unmatched protection** for even the deepest and most demanding excavations. Steel Wall Trench Shields are engineered for durability and reliability, these trench shields provide critical safety for your crew while maintaining the integrity of trench walls in challenging soil conditions.



Designed for ease of use and maximum stability, Efficiency Production Steel Wall Trench Shields help ensure your projects are completed safely, efficiently, and on time.

Conventional Double Wall Steel Trench Shield

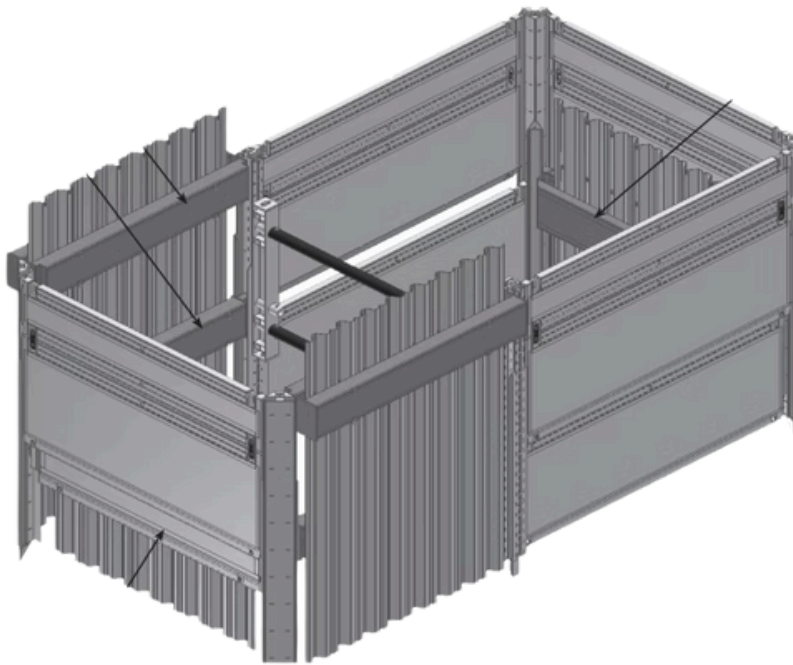
4" Thick Wall (XLD)	Weight	B-Soil	C-60	C-80	Pipe-Clr
4' High x 10' Long	2,850 lbs	61	46	34	22
4' High x 12' Long	3,380 lbs	61	46	34	22
4' High x 16' Long	4,130 lbs	33	25	19	22
4' High x 20' Long	4,970 lbs	27	20	15	22
4' High x 24' Long	6,130 lbs	19	14	10	22
8' High x 12' Long	5,090 lbs	45	34	25	64
8' High x 14' Long	5,090 lbs	45	34	25	64
8' High x 16' Long	7,270 lbs	35	26	20	64
8' High x 20' Long	8,920 lbs	29	22	16	64
8' High x 20' Long	11,420 lbs	19	14	10	64
10' High x 10 Long	6,020 lbs	59	44	33	84
10' High x 16 Long	9,040 lbs	29	22	16	84
10' High x 20 Long	10,890 lbs	21	16	12	84
10' High x 24 Long	12,910 lbs	59	44	33	84



SLIDE RAIL

Installation Assistance

Mountainview Systems offers its customers access to our highly trained team of Slide Rail installation advisors. Our team of professionals can review your site plans and provide solutions for your upcoming projects as well as be onsite during the install and removal of our Slide Rail shoring systems to ensure your success.



4 Sided Pits

Clear Span (Utilizes whaler beam to eliminate cross members and struts for an open pit)

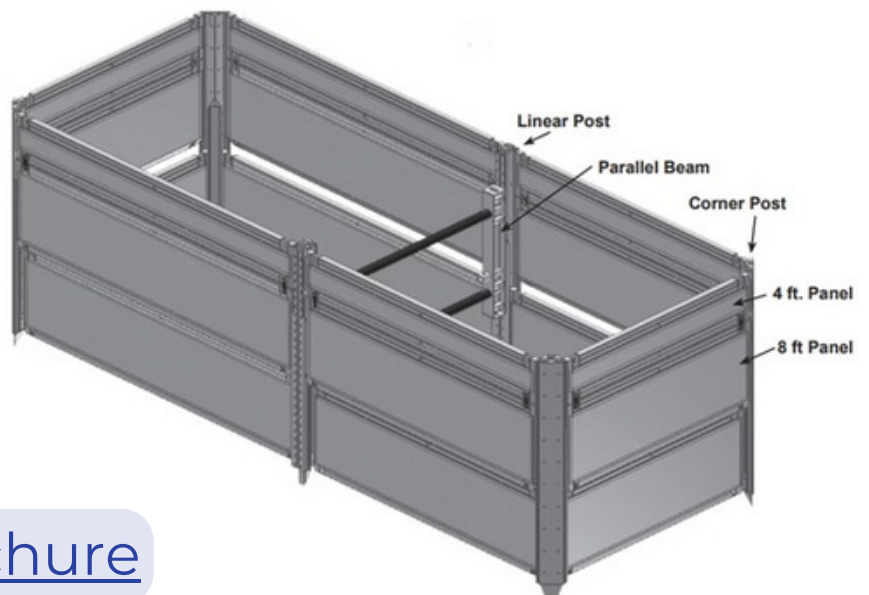
Multi-Bay

Linear Multi-Bay

Shore Trak-Panel Guides

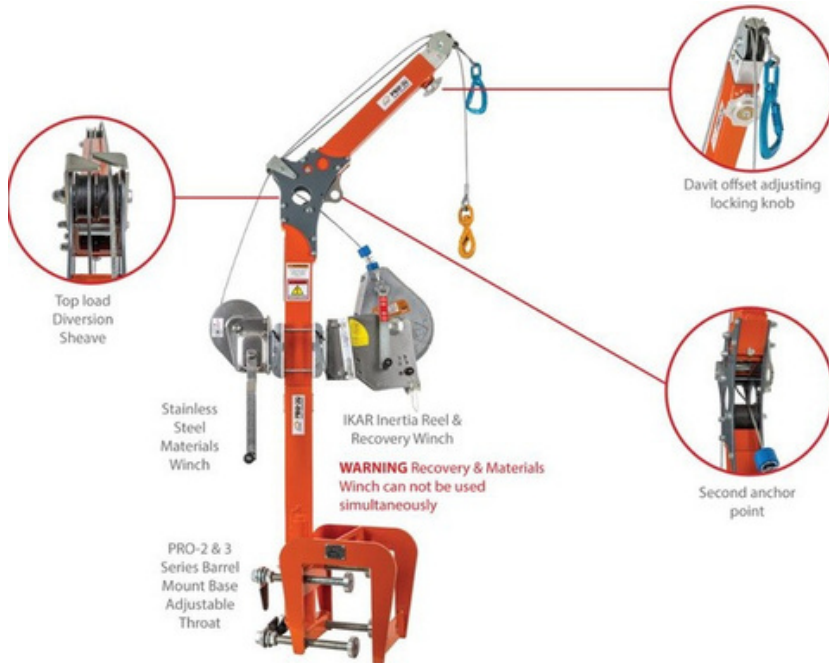
Site Specific Engineering Packages

Through our experienced Partners and Engineers we are able to offer our customers "Site Specific Engineered Packaged" based on geotechnical information and data pertaining to the purposed excavation.



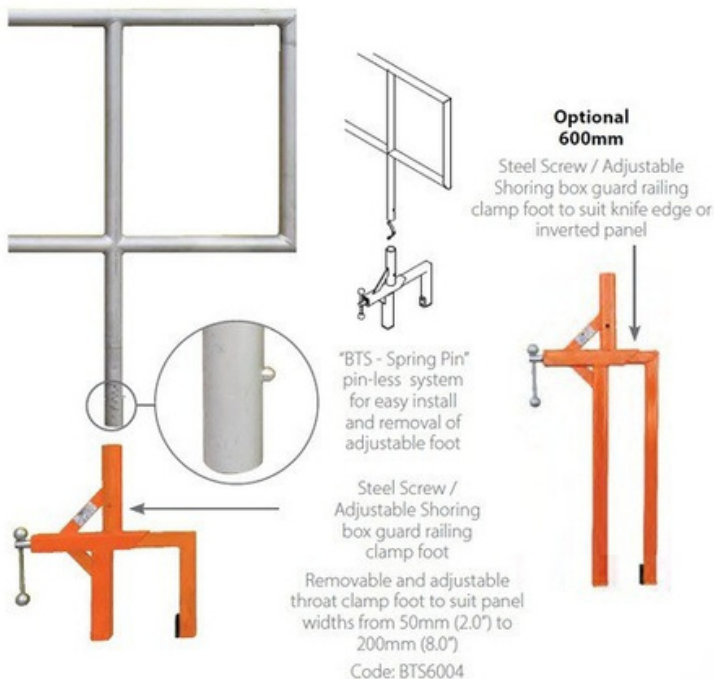
[Slide Rail Brochure](#)

DAVIT ARM RENTALS



BTS Davit & Guard Rails

ALUMINUM GUARD RAIL



ROAD PLATE

Part Number	Description	Weight
RP3443	34" Wide x 43" Long	600 lbs
RP-44	4' Wide x 4' Long	800 lbs
RP-48	4' Wide x 8' Long	1,600 lbs
RP-57	5'3" Wide x 7'6" Long	1,750 lbs
RP-510	5' Wide x 10' Long	2,500 lbs
RP-810	8' Wide x 10' Long	4,000 lbs
RP-812	8' Wide x 12' Long	4,800 lbs
RP-816	8' Wide x 16' Long	6,400 lbs
RP-820	8' Wide x 20' Long	8,000 lbs



Road plates are designed with a flush-mounted lifting point, which allow for easy, balanced handling with no protrusions above the surface, ensuring smooth and secure placement every time.



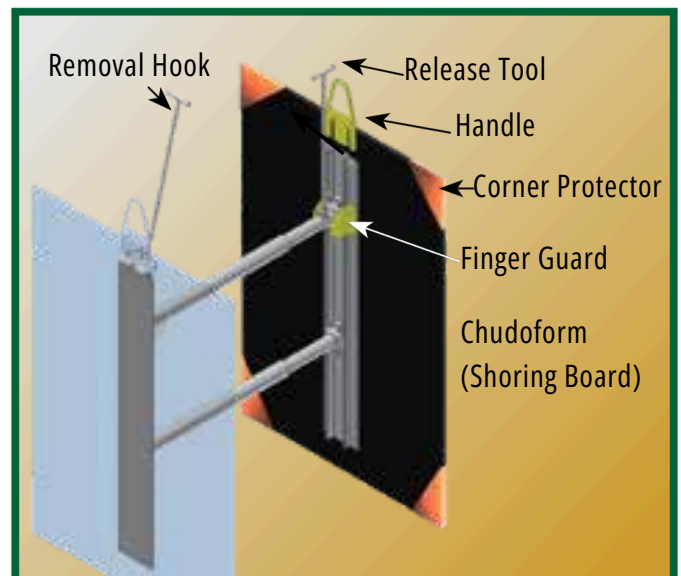
HYDRAULIC SHORING

Cylinder Sizes

22" - 36" Hydraulic Cylinders

28" - 46" Hydraulic Cylinders

36" - 55" Hydraulic Cylinders



ChudoForm Board

4' x 8' Chudoform & Rails

4' x 12' Chudoform & Rails

4' x 16' Chudoform & Rails

PIPE PLUGS

LANSAS & CHERNE Multi-Size Back and Front Pipe Plugs are the most durable Multi-Size Pipe Plugs available today. 2-plys of cross-biased tire cord reinforcement (more on larger sizes) built in each plug.

PART #	SIZE	TYPE	INFLATION	MAX BACK PRESSURE	LENGTH(inch)	WEIGHT(lbs)
270032	3" Test Ball Plug	Single	35 psi	13 psi	5.2	0.4
030-03	3" Test Ball Plug	Single	30 psi	15 psi	6	1
270040	3" Test Ball Plug	Single	30 psi	13 psi	6.5	0.56
030-04	4" Test Ball Plug	Single	30 psi	15 psi	6	1.2
270067	6" Test Ball Plug	Single	30 psi	13 psi	9	1.9
030-06	6" Test Ball Plug	Single	30 psi	15 psi	6	2.5
030-08	8" Test Ball Plug	Single	25 psi	15 psi	7.75	4.8
041386	8" Test Ball Plug	Single	25 psi	15 psi	10.25	3.9
041394	10" Test Ball Plug	Single	25 psi	17 psi	11.75	6
030-10	10" Test Ball Plug	Single	25 psi	15 psi	9.75	7.6
041048	12" Test Ball Plug	Single	25 psi	17 psi	13.75	11.3
035-12	12" Test Ball Plug	Single	25 psi	15 psi	11.75	11

Single Size Plugs



Multi-Size Flow-Thru



The Flow-Thru™ plug goes one step further by offering a large bypass within the pipe plug. The bypasses are ideal for doing a water test or sewer bypass.

PART #	SIZE	FLOW THROUGH	INFLATION	MAX BACK PRESSURE	LENGTH(inch)	WEIGHT
092-48	4"-8" (102-203mm)	2" Hard	30 psi	15 psi	15	6.5
093-610	6"-10" (152-254mm)	3" Hard	30 psi	15 psi	19.7	15
094-812	8"-12" (152-300mm)	4" Hard	25 psi	15 psi	20	20
094-1016	10"-16" (254-406mm)	4"	25 psi	15 psi	28	36
094-1530	15"-30" (381-762mm)	4" Soft	20 psi	8 psi	52	69
094-2036	20"-36" (508-914mm)	4" Soft	20 psi	8 psi	64	117
316448 (316488)*	24"-48" (600-1200mm)	6" Hard	22 psi	10 psi	68	135
316618 (316600)*	24"-60" (600-1500mm)	6" Hard	25 psi	6 psi	88	189
094-3660	36"-60" (914-1524mm)	4" Soft	10 psi	6 psi	84	208
414608 ***	40"-60" (1000-1500mm)	4" Hard	25 psi	8.7 psi	73	350
316968	54"-96" (1375-2400mm)	6" Hard	11 psi	6 psi	132	752



SPECTRA RECEIVERS & LEVEL BEST



LR30

Three selectable accuracies meet job tolerances from rough grading to final finishing for **maximum flexibility**



LR50

Built-in plumb indicator for **fast, accurate grade** checking in excavation applications



LR60

Offset on-grade for productive excavation provides additional above grade information for less undercuts



RD20 Wireless Remote Display

Mounts in the cab and displays grade information to the operator. Helps keep focus on the work and not on the receiver for higher productivity. Works with LR30W, LR50W & LR60W

RENT-TO-OWN OPTIONS AVAILABLE

The Level Best **PD Series** comes ready to produce precise grading by working seamlessly with the on-site horizontal laser reference alongside **highly accurate satellite measurements** for the vertical reference points. Level Best also comes ready to use with GPS, total stations or sonic technology

PD Series & GB Series

- PD72 72" 2,020 lbs
- PD84 84" 2,070 lbs
- PD96 96" 2,155 lbs
- GB96 96" 2,570 lbs
- GB108 108" 2,620 lbs

The Level Best **GB Series** Grader Blade lets you do even more with equipment you already have. Capable of cutting turf with the **power and traction** of a compact track loader, the GB108 can also be used with a skid steer for lighter applications.



TOTAL STATIONS

The Leica iCON robotic total stations accelerate construction and installation processes, allowing users to layout more points every day with accuracy and confidence.



[ICON Leica Brochure](#)

Features include:

- Up to 3500m distance to prism for measurements
- 1mm measurement accuracy
- Icon Field Software running on the unit or available tablet (Depending on model)
- Long range Bluetooth (up to 400m)

**RENT-TO-OWN
OPTIONS
AVAILABLE**



SPECTRA PRECISION LASERS



Spectra Precision takes pride in **robust** rotary Laser Levels. These are tools that are engineered to deliver **unparalleled accuracy** in alignment tasks.



**RENT-TO-OWN
OPTIONS
AVAILABLE**



[Spectra
Brochure](#)

Features include:

- Up to 1200+ meter operating diameter (4000 ft)
- Bluetooth connectivity and Spectra Precision Laser Remote App eliminates extra cost of the remote (specific models only) -
- Up to 1/16" accuracy at 100' depending on model (1.5mm at 30m)
- Up to 175 hours operating time on alkaline batteries
- Unbeatable 5-year warranty
- Single person manual slope - *model dependent



LEICA GPS



These devices provide **high-precision positioning** using GNSS technology (GPS, GLONASS, Galileo, BeiDou)

Integrate seamlessly with Leica iCON field software for tasks like staking out points, grade checking, cut/fill calculations, as-built verification, and basic machine guidance.

Leica iCON GNSS

The Leica iCON GNSS portfolio consists of smart antennas (often called network rovers) designed **layout** for construction sites

RENT-TO-OWN OPTIONS AVAILABLE

The equipment is built for challenging construction environments, with **high IP ratings** (e.g., IP66/IP68) for protection against: Water, Sand and Dust



Rugged durability to **withstand drops and strong vibrations**



RIDGID TOOLS



SR-20 UTILITY LOCATOR

The SeekTech SR-20 Locator is a **lightweight yet rugged** receiver that provides all the information needed for faster, more **accurate locates**. Target line and guidance arrows quickly identify distortion.



**RENT-TO-OWN
OPTIONS
AVAILABLE**



SEESNAKE CAMERA & MONITOR

Digital Monitors comes equipped with **Wi-Fi connectivity**.



- Easy operation
- Brighter LEDs improve in-pipe visibility
- HDR, bright LEDs, and self-leveling camera offer superior imaging



- Ultra flexible NANOreel has a 15.5mm camera to fit through P-traps
- Reel lengths up to 325' (99m)
- Integrated Sonde on select models
- Offers the smoothest in-pipe visual

[Camera Brochure](#)

CONTACT US BY LOCATION

CALGARY

3458 48th Ave SE
Alberta
T2B 3L6
403.248.8500
Team.Southern@mvs.ca

EDMONTON

220120 113TH Ave
Alberta
T5S 2V7
780.483.0920
Team.Northern@mvs.ca

LANGLEY

19643 96th Ave
British Columbia
V1M 3C9
604.513.5878
Team.Pacific@mvs.ca

SASKATOON

713 66th Street East
Unit 10
Saskatoon
S7P 0E4
306.978.8500
Team.Saskatchewan@mvs.ca